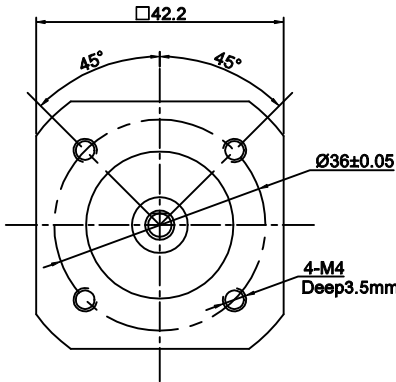
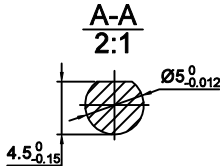
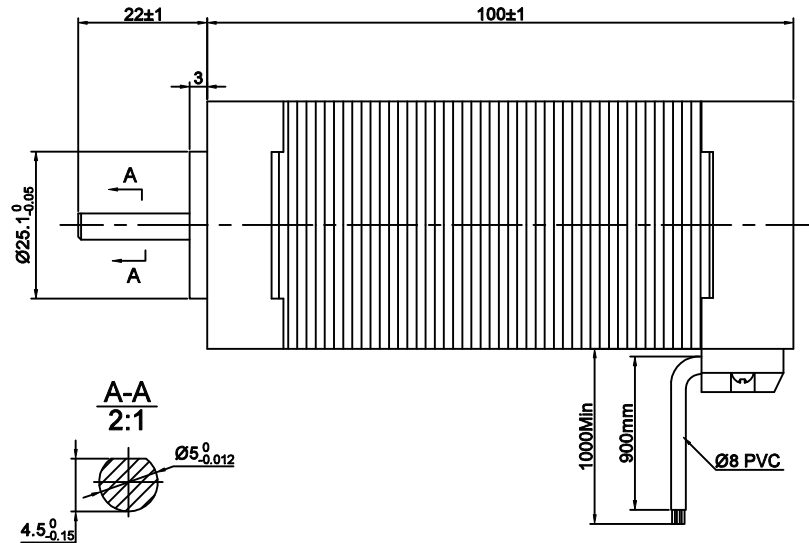
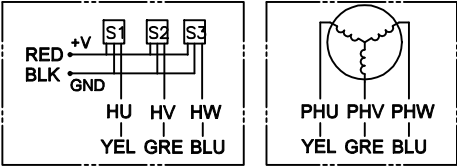


直流无刷电机规格书
DC BRUSHLESS MOTOR SPECIFICATION

外形图 (DIMENSIONS) unit=mm



电机连接图:
Motor Connection diagram:



Hall sensor cable
Note: hall sensor power supply
voltage +5 to +20VDC

Wiring cable

转向: 从前出轴看为顺时针
ROTATION: CW VIEWED FROM OUTPUT SHAFT

NUMBER OF POLES	极数	8
PHASE TO PHASE RESISTANCE	相电阻	0.43 OHMS
RATED VOLTAGE	额定电压	24 VDC
NO LOAD SPEED	空载转速	5500±10% RPM
NO LOAD CURRENT	空载电流	0.75 Amps Max.
RATED TORQUE	额定扭矩	0.25 N-m
RATED SPEED	额定转速	4000±10% RPM
RATED CURRENT	额定电流	6.3 Amps
OUTPUT POWER	额定功率	105 W
BACK EMF CONSTANT	反电动势系数	4.36 V/kRPM
TORQUE CONSTANT	扭矩常数	0.04 N-m/A
INSULATION CLASS	绝缘等级	B

ELECTRICAL CONNECTION TABLE					
+5V	RED	红	UL3266 26 AWG		
HALL U	YEL	黄			
HALL V	GRE	绿			
HALL W	BLU	蓝			
GND	GND	黑	UL3266 18 AWG		
PHASE U	YEL	黄			
PHASE V	GRE	绿			
PHASE W	BLU	蓝			

				Title: 规格书 Specification			
				公司 COMPANY	常州精控电机电器有限公司 www.jkongmotor.com		
版本 REV.	变更内容 REVISION RECORD			日期 DATE	图号 DWG.NO.	JK42BLS04-04-X002	
设计 DESIGN	ZY	2024.01.18	标准化 STANDARDIZATION		材料 MATERIAL	变更标识 ECN SIGN	※ SIZE A4
制图 DRAWN							
校对 PROOFREAD			审核 CHECKED				
工艺 PROCESSED			批准 APPROVED		版本 REV.	A	比例 SCALE 1 of 1